





Hayman Safe Company, using its 35 years of safe design experience, has combined brute strength with dry-composite construction to create the new economical line, the DynaVault. With a 1 hour manufacturer's fire label, unique locking system, a U.L. listed RSC label, and streamlined hinges, you can have the peace of mind knowing that your valuables are safe without taking a lot out of your pocket.

Features

- U.L. Listed RSC (Residential Security Container) Label
- Light Weight, Dry Composite Construction - 3 3/4" Thick Door - 1 1/2" Thick Body
- 1 Hour Manufacturer Fire Label
- Intumescent door seal (the seal swells up to 8 times its normal thickness at high temperatures to lock out heat)
- 1 1/4" Unique locking system. Upon closing, the steel framework on the back of the door slides behind the doorframe, securely locking the safe.
- Decorative stainless steel trim on hinge side
- Security of 2 relocking devices

- Drill resistive hard plate
- Adjustable shelf
- Mounting holes provided

Options

Additional Shelves	
U.L. listed key lock	
Key locking dial for combination lock	

Dimensions

Model	Outside Dimensions H x W x D	Weight	Cubit Foot Capacity	Inside Dimensions H x W x D	Price
DV-1215	15" x 18 ¹ / ₄ " x 14 ¹ / ₄ "	115 lbs.	.79	11 ¹ / ₄ " x 14 ³ / ₈ " x 8 ¹ / ₄ "	
DV-2117	23 ¹ / ₂ " x 19 ³ / ₄ " x 19 ³ / ₄ "	180 lbs.	2.5	20" x 16" x 13 ¹ / ₂ "	
DV-2720	29 ¹ / ₂ " x 22" x 22"	285 lbs.	4.46	26" x 18 ¹ / ₄ " x 16 ¹ / ₄ "	

Magna Vault



MV5-4120

Hayman Safe Company, using its 30 years of safe design experience, has combined brute strength with composite construction to create the new Magna Vault. With a 1 1/2 hour manufacturer's fire label and massive bolts you can have the peace of mind knowing that your important papers and valuables will be protected in the event of an attack. The large hinges and quality U.L. group 2 locks being used insure you of many worry-free years of protection.

Features

- Composite Construction - 5" Thick Door - 2" Thick Body
- 1 1/2 Hour Manufacturer Fire Label (except MV5-1215)
- 1 1/2" Bolts (except MV5-1215 which has 1" Bolts)
- Full Length hinge side locking bar
- Dual Re-locks
- Drill resistive hard plate
- Adjustable shelves
- Mounting holes provided
- Standard paint color - Tan

Options

Black or Gray Color	
Your choice of electronic locks	
U.L. listed key lock	
Key locking dial for combination lock	

Dimensions

Model	Outside HXWXD	Wt	Cu. In. Cap.	Inside HXWXD	Price
MV5-1215	15"x18 ¹ / ₄ "x14 ¹ / ₄ "	234 lbs.	1493 Cu. In.	11 ³ / ₄ "x15"x9"	
MV5-2016	24"x19 ³ / ₄ "x19 ¹ / ₂ "	508 lbs.	3777 Cu. In.	20"x15 ³ / ₄ "x12 ¹ / ₂ "	
MV5-2618	29 ¹ / ₂ "x22"x22"	699 lbs.	6646 Cu. In.	25 ¹ / ₂ "x18"x15"	
MV5-3020	34"x23 ¹ / ₂ "x23 ¹ / ₂ "	843 lbs.	9405 Cu. In.	30"x19 ¹ / ₂ "x16 ¹ / ₄ "	
MV5-4120	45"x24"x23 ¹ / ₂ "	1047 lbs.	12854 Cu. In.	41"x20"x16 ¹ / ₄ "	
MV5-6028	63 ¹ / ₄ "x31 ¹ / ₂ "x24 ¹ / ₄ "	1740 lbs.	28980 Cu. In.	59 ¹ / ₄ "x27 ¹ / ₂ "x17 ¹ / ₂ "	

Polyethylene In-Floor Safes



FS4000B



FS2300B



S1200B (5 Bolt)
S1201B (Lock Bolt Only)

Our patented "Poly" safe represents the most dramatic design innovation ever for in-floor safes. This safe provides features never before dreamed of, such as; storage shelves, a filing system and a false floor. False floor available on FS4000B model only. When an in-floor safe is what you need, this is the one you want.

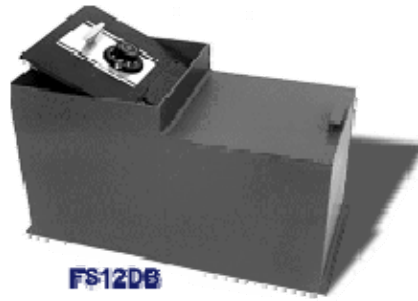
- Interchangeable Door with FS series safes
- 1/2" Solid Steel Door w/ Large Stainless Steel Flat Locking System
- Patented, Spring-assisted, Lift-off Door
- Patented Polyethylene Body is Rustproof and Leak Resistant
- Dual Relock System
- Drill Resistive Hardplate
- UL Listed Combination Locks
- Carpeted Floors
- 1/4" Thick Door Collar bolted to the body on all 4 sides using specially hardened bolts
- 1/2" Thick Door Frame welded to the door collar
- Versatile Storage System
- Guaranteed protection against Fire, Burglary, & Seepage
- The [HAYMAN GUARANTEE](#)* on the FS series safes

Model	Outside Dimension H x W x D	Weight	Cubic Inch Capacity	Inside Dimensions H x W x D	Price
FS4000B	20 ¹ / ₄ x 21 ³ / ₄ x 15 ¹ / ₂	86lbs.	4,130cu.in.	17 ¹ / ₄ x 20 ¹ / ₄ x 12 ¹ / ₂	
FS2300B	15 x 18 ¹ / ₂ x 15 ¹ / ₂	80lbs.	2,330cu.in.	12 x 17 x 12 ¹ / ₄	
S1200B	14 ³ / ₄ x 15 x 10 ¹ / ₄	42lbs.	1,200cu.in.	11 ¹ / ₂ x 14 ¹ / ₂ x 8	
S1201B	14 ³ / ₄ x 15 x 10 ¹ / ₄	42lbs.	1,200cu.in.	11 ¹ / ₂ x 14 ¹ / ₂ x 8	

OPTIONS

UL Listed Electronic Lock	
Deposit Slot with Saw-tooth	
UL Listed Key Lock in place of Combination	
Key Locking Dial on Combination Locks	
Water Resistive Seal for New Construction Installations	
1" Solid Steel 5-Bolt Door	

Steel In-Floor Safes



Solid Steel Construction... This is the way it has always been done, and if steel construction is what is called for, then the **HAYMAN FS** line is your best choice. With the Patented spring assisted lift-off door it has been the leader of the Safe Industry for years.

- Interchangeable Doors with FS Series Safe
- 1/2" Solid Steel Door w/Large Stainless Steel Flat Locking System
- Solid Steel Walls
- Dual Relock System
- Drill Resistive Hardplate
- UL Listed Combination Locks
- Patented, Spring-assisted, lift off door
- Carpeted Floors
- The [HAYMAN GUARANTEE](#)* on the FS Series Safes.

Model	Outside Dimension H x W x D	Weight	Cubic Foot Capacity	Inside Dimensions H x W x D	Sliding Shelves	Price
FS8B	12 ¹ / ₄ x 15 ³ / ₄ x 14 ¹ / ₄	95 lbs.	.97	9 x 14 x 13 ¹ / ₄	0	
FS12B	16 ¹ / ₄ x 15 ³ / ₄ x 14 ¹ / ₄	103 lbs.	1.35	13 x 13 ¹ / ₂ x 13 ¹ / ₄	0	
FS16B	20 ¹ / ₄ x 15 ³ / ₄ x 14 ¹ / ₄	114 lbs.	1.79	17 x 13 ³ / ₄ x 13 ¹ / ₄	0	
FS12DB	16 ¹ / ₄ x 29 ¹ / ₂ x 14 ¹ / ₄	156 lbs.	2.72	13 x 27 ¹ / ₄ x 13 ¹ / ₄	1	
FS16DB	20 ¹ / ₄ x 29 ¹ / ₂ x 14 ¹ / ₄	165 lbs.	3.55	17 x 27 ¹ / ₄ x 13 ¹ / ₄	1	
FS12TB	16 ¹ / ₄ x 43 ³ / ₄ x 14 ¹ / ₄	187 lbs.	4.11	13 x 41 ¹ / ₄ x 13 ¹ / ₄	2	
FS16TB	20 ¹ / ₄ x 43 ³ / ₄ x 14 ¹ / ₄	222 lbs.	5.38	17 x 41 ¹ / ₄ x 13 ¹ / ₄	2	

OPTIONS

UL Listed Electronic Lock	
Deposit Slot with Saw-tooth	
UL Listed Key Lock in place of Combination	
Key Locking Dial on Combination Locks	
Water Resistive Seal for New Construction Installations	
1" Solid Steel 5-Bolt Door	

High Security Wall Safes

A wall Safe unit that is hard to find anywhere else. The WS6B is the same depth as a cement block and fits into a block wall. Bolts secure the safe from the inside directly into the concrete. A flush front door allows total concealment behind wall board of picture.

- 1/2" Solid Steel Door w/Large Stainless Steel Flat Locking System
- Solid Steel Walls
- Dual Relock Systems
- Drill Resistive Hardplate
- UL Listed Key or Combination Locks
- Recessed Door w/ Heavy Duty hinge
- 2 Removable Shelves
- Mounting Holes provided
- |The [HAYMAN GUARANTEE](#)*



Model	Outside Dimensions H x W x D	Weight	Cubit Foot Capacity	Inside Dimensions H x W x D	Price
WS6B	13 ³ / ₄ x14x7 ³ / ₄	95lbs.	670cu.in.	13 ¹ / ₄ x13 ¹ / ₂ x3 ³ / ₄	

OPTIONS

UL Listed Electronic Lock	
UL Listed Dual Key Lock in place of Combination on 1/2 " Door	
Key Locking Dial on Combination Lock	

Economy In-Floor Safes



Price is the issue... When cost becomes a factor, then the **HAYMAN "S"** line is the answer. Just some of the amenities have been removed from these burglar resistive safes.

- Interchangeable Doors with [S1200 Series](#) Polyethylene Safes.
- 1/2" Solid Steel Door w/ Large Stainless Steel Flat Locking System on the S10B and S20B.
- 1/2" Solid Steel Economy Door with Combination Lock Bolt only on the S30B and S40B.
- Solid Steel Walls
- Dual Relock System
- Drill Resistive Hardplate
- UL Listed Combination Locks
- Choice of the Stainless Steel Flat Locking System Door or the Economy Door
- Carpeted Floors
- The [HAYMAN GUARANTEE*](#) on the S10B and S20B.

Model	Outside Dimensions H x W x D	Weight	Cubic Foot Capacity	Inside Dimensions H x W x D	Price
S10B	125/8 x 103/4 x 85/8	60 lbs	.44	81/2 x 101/4 x 81/8	
S20B	171/8 x 103/4 x 85/8	60 lbs	.68	131/2 x 101/4 x 81/8	
S30B	121/8 x 103/4 x 85/8	40 lbs	.44	81/2 x 101/4 x 81/8	
S40B	171/8 x 103/4 x 85/8	55 lbs	.68	131/2 x 101/4 x 81/8	

OPTIONS

UL Listed Electronic Lock	
Deposit Slot	
UL Listed Key Lock in place of Combination	
Key Locking Dial on Combination Locks	
Water Resistive Seal for New Construction Installations	

D Series Depository Safes



Hayman's D Series Depository Safes allow the cashier to keep only the necessary funds available in the register. This new cost efficient design is constructed using modular components which provide strength as well as a pleasing appearance. Two Drop Methods to select from:

**POSI-DROP HOPPER:
D5B Series**

Full 11 1/4"L x 4 1/2"W x 7"D hopper opening
Straight sides on the inside for improved drop reliability.
Bank bags, rolled coins, small bundles handled easily.

**FRONT LOAD DROP:
D6B**

Full 12 1/8"L x 2 7/8"W x 5"D opening
Convenient front loading design will accept small bank bags as well as standard #10 business envelopes.
Drop can be positioned in the lower unit of the two door design to allow easy access to the more frequently accessed cash locker.

- 1/2" Solid Steel Door w/Large Stainless Steel Flat Locking System
- Door Recessed for added Security
- Removable and Interchangeable doors within model series.
- Dual Relock System on all Units.
- Drill Resistive Hard plate.
- UL Listed Combination Lock.
- Mounting Holes provided
- The [HAYMAN GUARANTEE*](#)

Model	Outside Dimensions H x W x D	Weight	Cubit Foot Capacity	Inside Dimensions H x W x D	Price
D5B	19 1/2 x 13 5/8 x 15	120lbs.	1988cu.in.	12 1/2 x 13 1/4 x 12	
D6B	19 1/2 x 13 5/8 x 15	120lbs.	1988cu.in.	12 1/2 x 13 1/4 x 12	
2 Compartment Safes					

D5-2B	32 ¹ / ₂ x13 ⁵ / ₈ x15	195lbs.	3976cu.in.	12 ¹ / ₂ *U/12 ¹ / ₂ *L13 ¹ / ₄ x12	
D6-2TB	32 ¹ / ₂ x13 ⁵ / ₈ x15	195lbs.	3976cu.in.	12 ¹ / ₂ *U/12 ¹ / ₂ *L13 ¹ / ₄ x12	
D6-2MB	32 ¹ / ₂ x13 ⁵ / ₈ x15	195lbs.	3976cu.in.	12 ¹ / ₂ *U/12 ¹ / ₂ *L13 ¹ / ₄ x12	

*L=Lower Unit *U=Upper Unit

OPTIONS

UL Listed Electronic Lock	
Key Locking Dial on Combination Locks	
UL Listed Dual Key Lock in place of Combination	

High Security Depository Safes



High Security Depository Safes protect from the threat of robbery and pilferage. These large capacity units are designed with removable shelves and areas for cash drawer storage. Three drop methods to choose from:

POSI-DROP HOPPER (H):

Full 13"L x 4 1/2"W x 7"D hopper opening
 Straight sides on the inside for improved drop reliability
 Bank bags, rolled coins, medium bundles

FRONT LOAD DROP (F):

Large 4 1/2"H x 13 3/4"W x 9"D receiving area
 Closes off the inside when allowing deposit
 Curved baffle resist fishing of deposit from unattended unit

REAR LOAD DROP (R):

Same specifications as the Front Load
 Mounted in the back of the safe to allow rear drop or
 through the wall depositing

- 1/2" Solid Steel Door w/ Large Stainless Steel Flat Locking System
- Removable and Interchangeable Doors
- Dual Relock System
- Drill Resistive Hardplate
- UL Listed Combination Lock
- Accepts standard Size Cash Drawers
- Removable Shelf
- Mounting Holes provided

Model	Outside HXWXD	Wt	Cu. In. Cap.	Inside HXWXD	Price
H,F,R 1520B	23x15 1/2x20 1/2	228lbs.	4331cu.in.	16 1/2x15x17 1/2	
H,F,R 2520B	33x15 1/2x20 1/2	278lbs.	6956cu.in.	26 1/2x15x17 1/2	
H,F,R 3020B	37x15 1/2x20 1/2	366lbs.	8137cu.in.	16 1/2*U/14 1/2*Lx15x17 1/2	

*L=Lower Unit *U=Upper Unit

OPTIONS

UL Listed Electronic Lock	
Key Locking Dial on Combination Locks.	
UL Listed Dual Key Lock in place of Combination on 1/2" door	
1" Solid Steel 5 Bolt Door	
